



# Annual Accident Report

# 2018



# OVERVIEW-MAJOR ISSUES



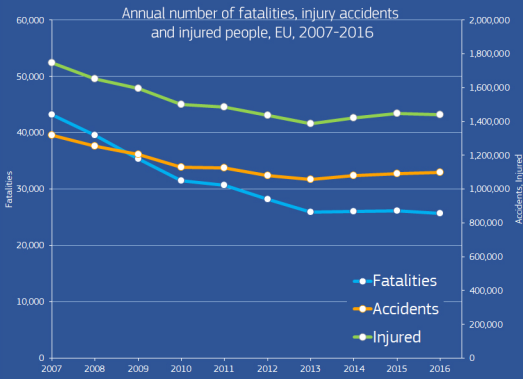
Data for 2016 or latest available year  
 ER Road Safety Observatory  
 www.erso.eu



**1 Million**  
 Road Accidents per Year -  
**3.000 per day** (2016)  
 with consequences:

**1,4 Million Injured**  
 (3.600 per day)

**25.600 Fatalities**  
 (70 per day)



Main progress in reducing fatalities

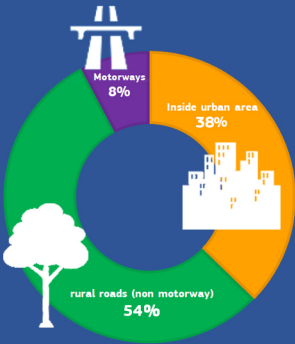
**-41%**



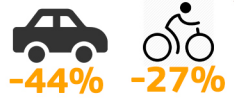
less in injury accidents

**-17%**

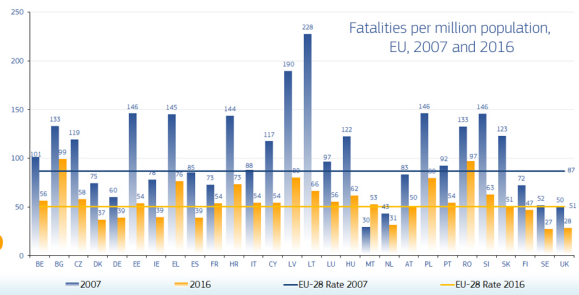
Share of fatalities by area type in the EU, 2016



The overall **downward trend** in the number of road fatalities is different for each road user



The most significant reduction in the overall number of fatalities between 2007 and 2016 occurred in **Lithuania, Estonia and Latvia**



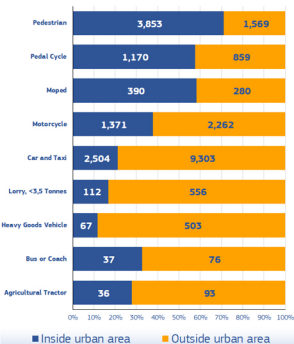
# FATALITIES 2016



Data for 2016 or latest available year

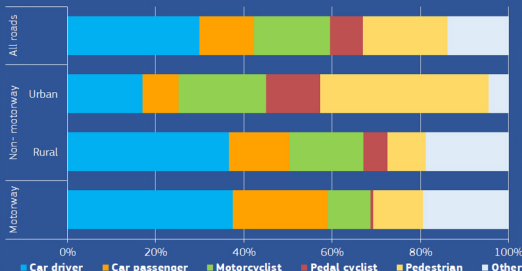


Fatalities by type of area and mode of transport in the EU, 2016



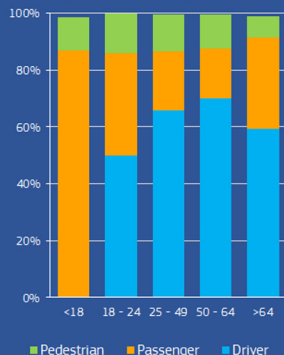
**47%** of all road fatalities are **car occupants**.  
On **motorways** this proportion increases to almost **60%**

Distribution of fatalities by road user type on three types of road, 2016



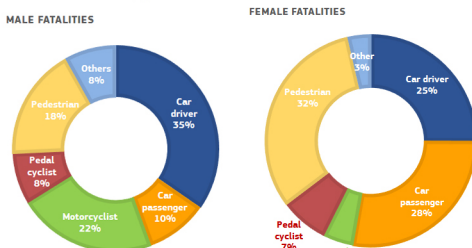
In 2016, **the elderly** (aged >64) represented almost **27%** of deaths in road accidents in the EU

Fatalities on motorways by age and road user type, EU, 2016



The proportion of fatalities **as passengers or pedestrians** is higher for females than for males

Fatalities by gender and mode of transport in the EU, 2016



Powered Two Wheelers (PTW) accounted for **17%** of the total number of road accident fatalities in the EU 2016:

**Motorcycles**  
**14%**  
**3,644 deaths**

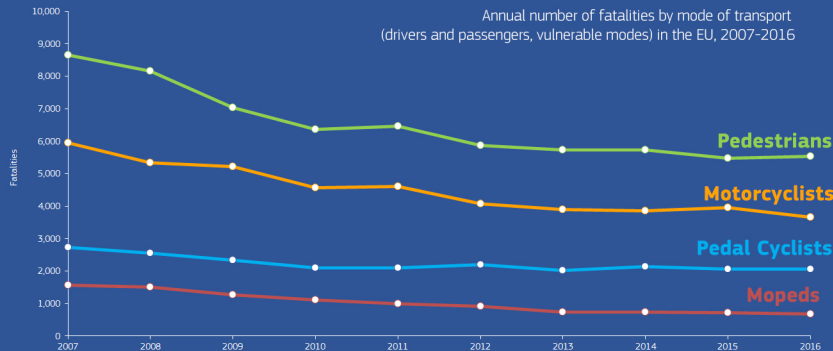
**Mopeds**  
**3%**  
**663 deaths**

# TIME SERIES

## LAST 10 YEARS IN DETAIL



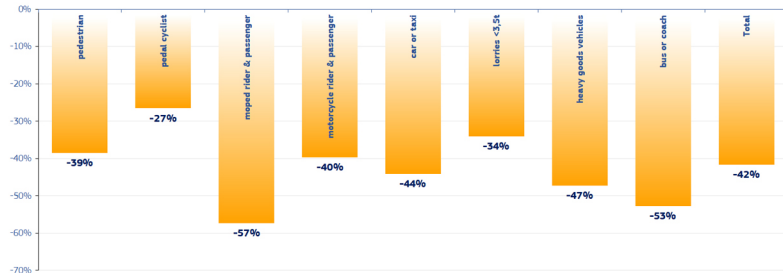
Data for 2016 or latest available year



Fatalities on roads outside urban areas were **reduced by 41%** between 2007 and 2016

Over the decade 2006-2015 passenger fatalities in the EU decreased by **48%**  
driver fatalities by **39%** and pedestrian fatalities by **36%**

Percentage change in number of fatalities by mode of transport in the EU (2016 compared to 2007)



Male fatalities were reduced by **41%** and female fatalities were reduced by **39%** within the decade 2007-2016

